



OTTAWA DENTAL  
LABORATORY

PRODUCT BROCHURE

# FULL ARCH DIGITAL WORKFLOW



# Take the Traditional and Make It DIGITAL

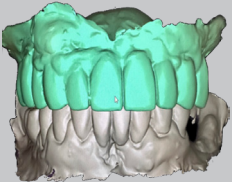
---

Whether it be for a new full arch prosthesis or upgrading an old hybrid, Ottawa Dental Laboratory makes the full arch process easier than ever! With our full digital workflow, we are able to provide the patient and doctor with the following benefits:

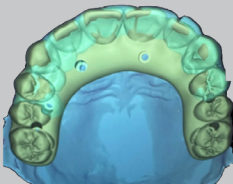
- » ICam4D Photogrammetry System
- » Fewer Patient Appointments
- » Same-Day/Next Day 3D Printing
- » Eliminate Expensive Implant Components
- » Digital Archive of Patient Records
- » Chairside Technician Support

## Pre-Surgery - Stage 0

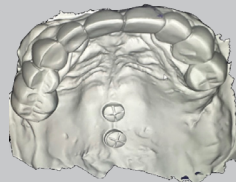
## Surgery - Stage 1



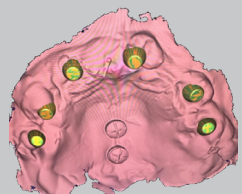
Pre-Op Records



Pontic Design



Alignment Tabs



White Cap Scan

# Full Arch Digital Workflow



Stage  
**0**

## Pre-Surgery

**Initial Image Capture**  
Pre-Op Records

Stage  
**1**

## Surgery

**Capture Placed Implants**

Photogrammetry  
PMMA: Same Day or  
Next Day Printing

Stage  
**2**

## Post Surgery

**IOS/Placed Image Capture**

Stage  
**3**

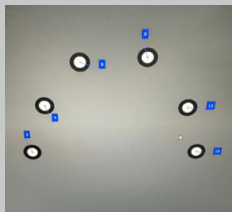
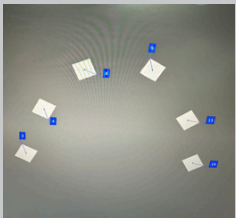
## Final Restorative Options

**Permanent**

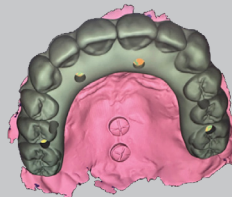
Zirconia  
Hybrid

*With our team bringing our expertise and advanced technology to you, this treatment could NOT be easier!*

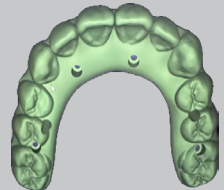
### Surgery - Photogrammetry - Stage 1



### Surgery - Stage 1



Merge Pontic Design

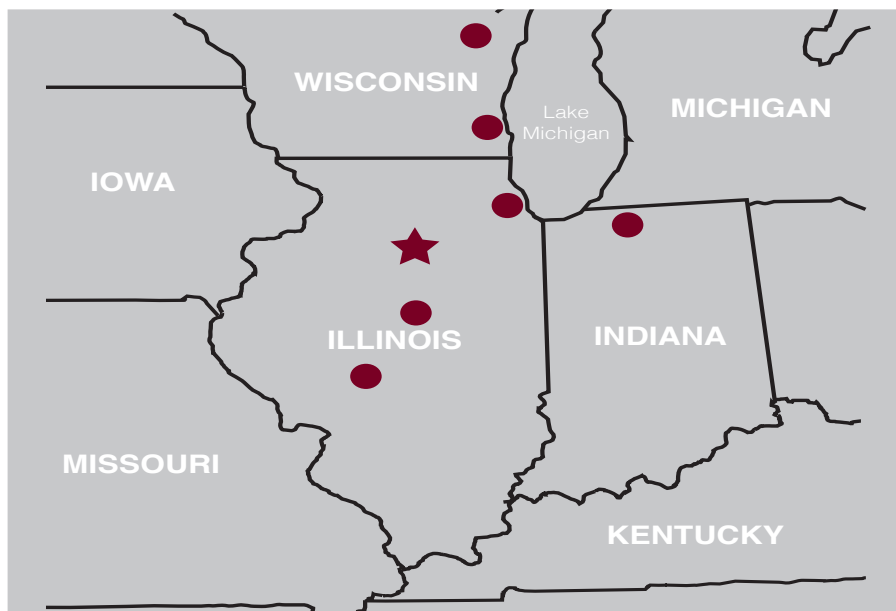


Send to Printer

To schedule, please contact Carol or Renee at 800-851-8239



**OTTAWA DENTAL**  
LABORATORY



**Ottawa, Illinois**

1304 Starfire Drive  
Ottawa, Illinois 61350  
PH: 800-851-8239

**Chicago, Illinois**

111 N. Wabash Avenue  
Suites 1100 & 1720  
Chicago, Illinois 60602  
PH: 312-332-4900

**Appleton, Wisconsin**

604 N. Richmond Avenue  
Appleton, Wisconsin 54911  
PH: 920-570-7740

**Ottawa, Illinois**

1615 E. Norris Drive  
Ottawa, Illinois 61350  
PH: 800-851-8239

**Springfield, Illinois**

4777 Alex Boulevard  
Springfield, Illinois 62711  
PH: 217-793-2735

**Greendale, Wisconsin**

5701 Broad Street  
Greendale, Wisconsin 53129  
PH: 414-421-6595

**Bloomington, Illinois**

208 N. Williamsburg Drive  
Bloomington, Illinois 61704  
PH: 309-662-1211

**South Bend, Indiana**

119 W. Ireland Road  
South Bend, Indiana 46614  
PH: 574-291-4115

**COMING SOON -  
Wheaton, Illinois**

2100 Manchester Road  
Wheaton, Illinois 60187  
PH: 800-851-8239